



**myDMX 2.0**

# Table of contents

## ***I Before We Start***

|                                   |          |
|-----------------------------------|----------|
| <b>1. What's New to myDMX 2.0</b> | <b>1</b> |
| <b>2. The myDMX 2.0 Package</b>   | <b>4</b> |
| <b>3. Fixture Profiles</b>        | <b>5</b> |

## ***II Getting Started***

|                        |           |
|------------------------|-----------|
| <b>1. Installation</b> | <b>6</b>  |
| <b>2. Setup</b>        | <b>6</b>  |
| <b>3. Editor</b>       | <b>8</b>  |
| <b>4. User</b>         | <b>10</b> |

## ***III Scene Builder***

|                                |           |
|--------------------------------|-----------|
| <b>1. Arranging Fixtures</b>   | <b>12</b> |
| <b>2. Controlling Fixtures</b> | <b>14</b> |
| <b>3. Effects</b>              | <b>16</b> |

## ***IV Other Features***

|                                     |           |
|-------------------------------------|-----------|
| <b>1. Easy Remote (coming soon)</b> | <b>19</b> |
|-------------------------------------|-----------|

# I Before We Start

Welcome to myDMX 2.0- a powerful and easy to use DMX lighting control app for PC and Mac. This manual will guide you through using the software. For a quick overview of the software jump straight to the Getting Started topics.



## 1. What's New to myDMX 2.0

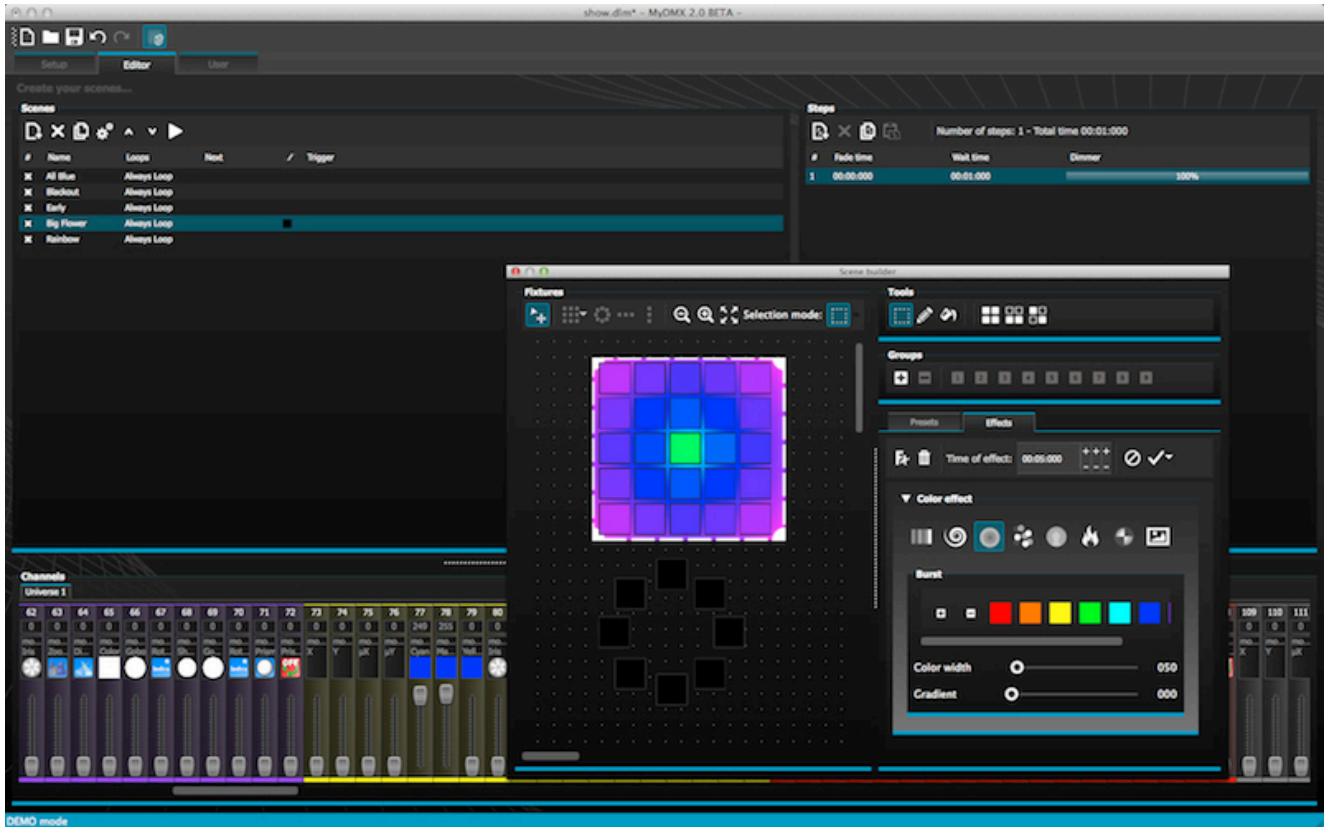
myDMX 2.0 has been re-built from the ground up. Here we will give an overview of the most important new features.

We have been asked to develop a Mac version of the software for many years. myDMX 2.0 is now PC and Mac compatible.



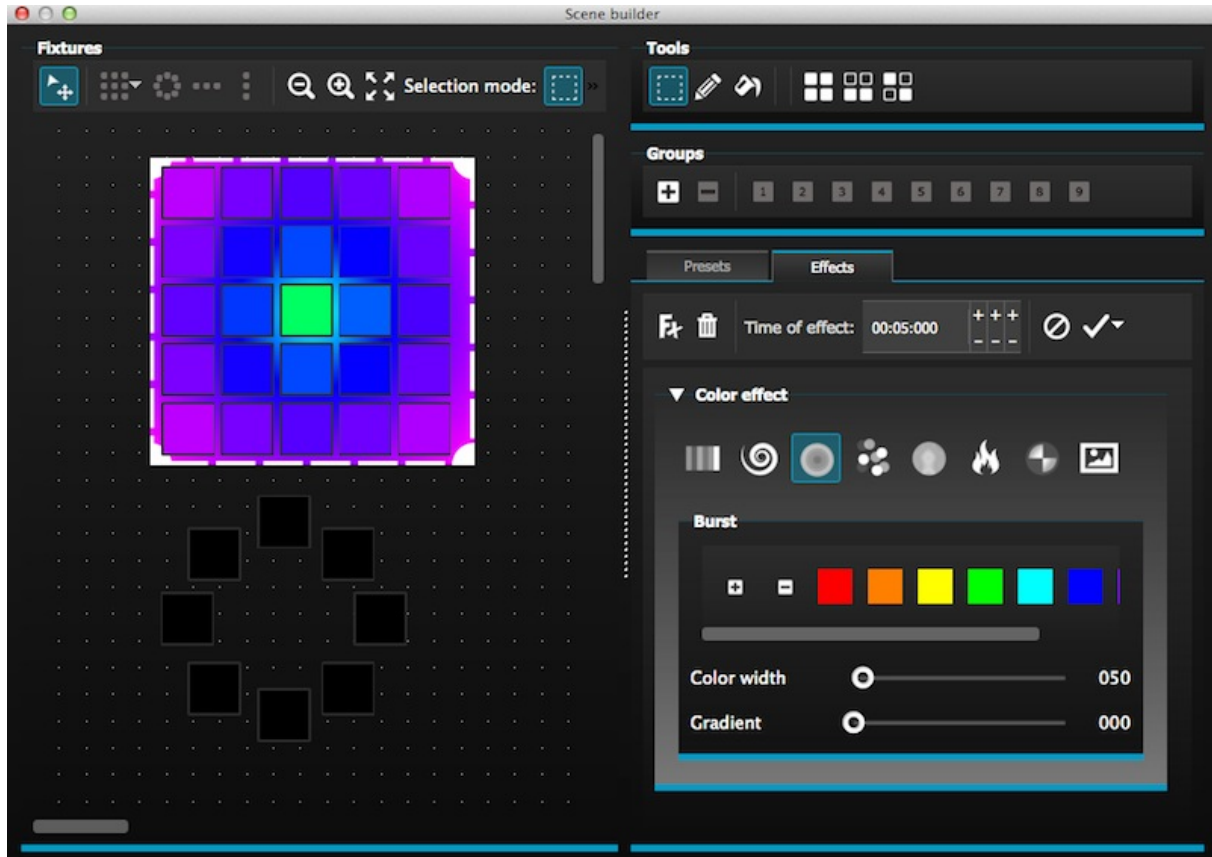
### New Design

The software features a new design, which includes new icons, faders, colors and preset components allowing for a quicker and more pleasant workflow. Quickly jump to a color or position with the new popup preset components and change the scene color on the User screen.



## The Scene Builder

The Scene Builder allows you to do everything you used to do with the original Effects Generator and more. Arrange lighting fixtures, draw effects directly onto fixtures and set your effects in real-time. The 'Linear Fan' effect allows you to create color gradients and position fans.



## SSL2 Fixture Profile Format

SSL2 fixture profiles allow more information to be stored about the personality of a lighting fixture. This allows for quicker and easier programming. For example, if you have an LED bar with several segments, you can control each segment individually whilst still having global control of master dimmer and macro channels.

## **2. The myDMX 2.0 Package**

### What's in the box

Your package should include the following:

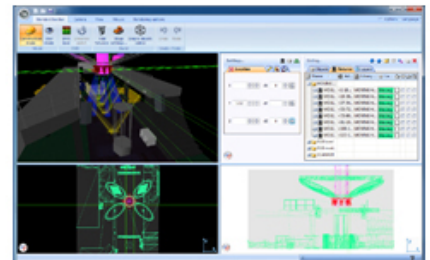
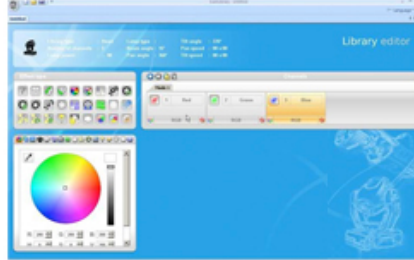
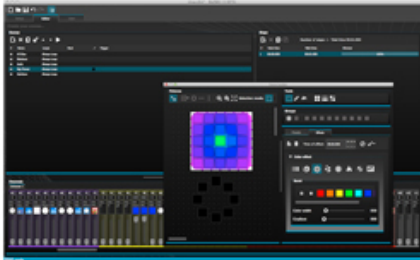
- CD with the software
- USB-DMX interface
- USB cable

The latest software versions and user manuals are available from our website.

### Software

The following software is included:

- myDMX 2.0 - DMX lighting programming app (PC and Mac)
- Scan Library – Used to build your own fixture profiles (PC only)
- EasyView – A real-time 3D visualizer (PC only)
- Hardware Configuration Tools – A USB-DMX interface management app (PC only)
- Easy Remote – Remote control of myDMX 2.0(iPad/Android Tablet)



### 3. Fixture Profiles

All of the attributes of a DMX device are saved in a special file called the "Fixture Profile" or .SSL2 file. The more accurate the fixture profile, the easier it will be to program your lighting with myDMX 2.0. If you have an incomplete fixture profile, myDMX 2.0 will not understand the lights you want to control and therefore it will be more difficult for you to program your lighting fixtures.

There is a profile for almost every fixture on the market. Fixture profiles can be created and edited with the "Scan Library" editor software. For more details on how to make Scan Library profiles, see the Scan Library topic.



---

# II Getting Started

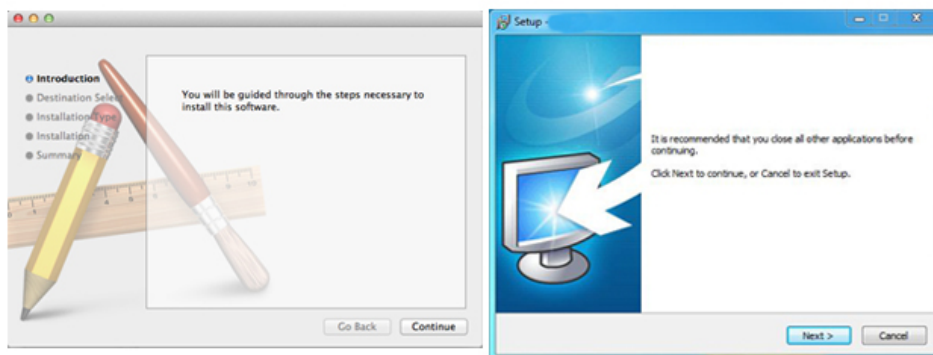
---

## 1. Installation

Insert the software installation CD into the CD drive of your computer, or download the software from our website. Double click the setup icon to install the software. Follow the installer instructions.

The USB interface drivers will be installed during the software installation. When installing on Windows, you may receive a warning message saying that the drivers have not been digitally signed. Press 'Continue Anyway'.

Once the installation is complete, connect the USB interface. Windows systems will run a second device driver installation. Once you see a message bubble on the taskbar to say that the driver has been installed successfully, you are ready to start the myDMX 2.0 software.



---

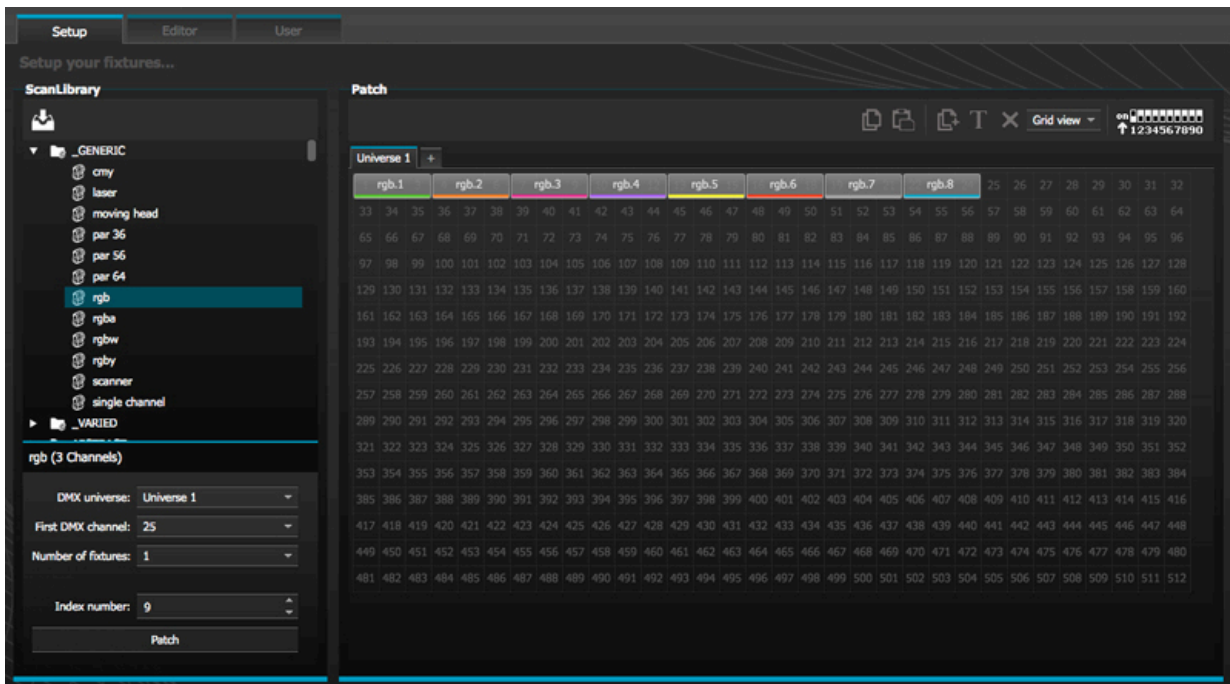
## 2. Setup

To begin with, the software needs to be told which lighting fixtures are being used. Select your lighting fixture from the list of manufacturers on the left. If you are looking to add an RGB, RGBD, RGBW, RGBY or Single channel fixture, select the \_GENERIC folder at the top. If you do not see your lighting fixture in the list, you will need to make it yourself using the Scan Library editor (PC only), or contact us and we will build the profile for you.

To add your lighting fixture, drag and drop it onto the DMX patch table, or select the number of fixtures and starting channel in the bottom left and select patch. Fixtures can be moved within the DMX patch by dragging and dropping.

If you are looking to add a matrix of lighting fixtures such as an RGB wall or dancefloor, patch the total number of lighting fixtures here and refer to the 'Arranging Fixtures' topic for more information.

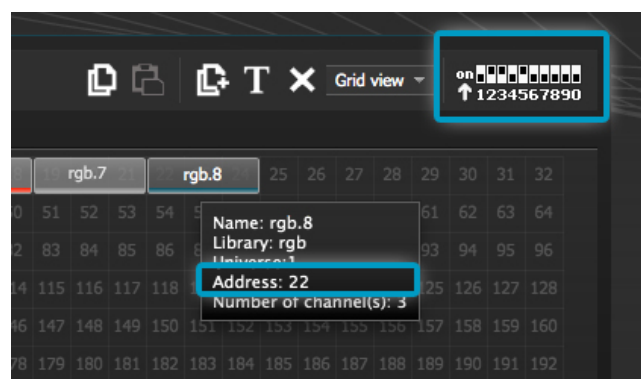




### Addressing your Lighting Fixture

Each lighting fixture must be given a unique number or “Address”. The address is normally set via an LED display or Dip Switches on the actual lighting fixture. Hover over a fixture to know the address and click the fixture to see the dip switches required to set this address. For example, this lighting fixture is set to address 22.

For more information on setting the address on a lighting fixture, refer to the fixture manufacturers manual.



### List View

To change individual fixture properties, select ‘List View’.

The following options are available:

Shortcut- To control the selected channel with the mouse, select a keyboard shortcut here

Fade- Enables and disables fading of the channel. For example, you may wish to ignore all fade commands on a gobo channel

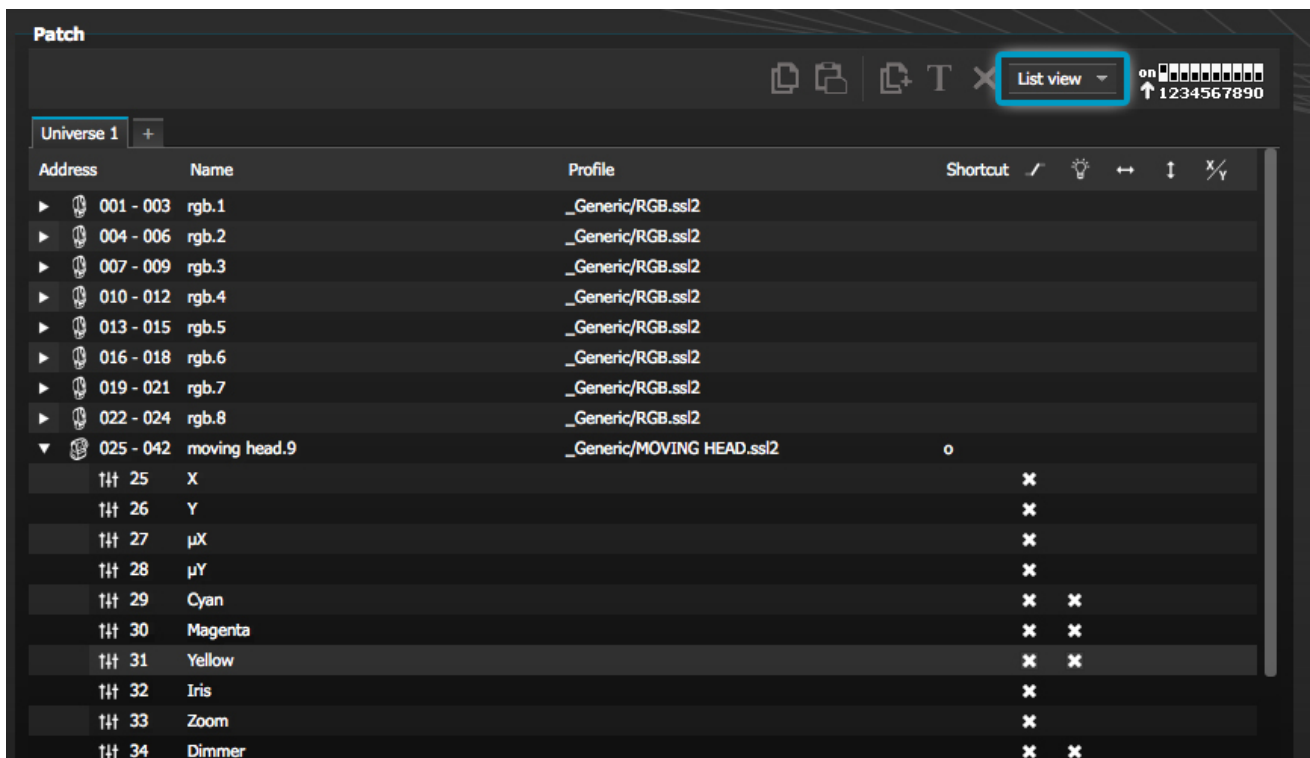
Dimmer- Defines a dimmer channel (when the dimmer % value of a step is changed, this channel will

be changed)

Invert X- Inverts the X channel, so when the fader is at 0, the software will output 255

Invert Y- Inverts the Y channel, so when the fader is at 0, the software will output 255

X/Y- Swaps the X and Y channels



### 3. Editor

#### Controlling Channels

The editor is where all lighting programming is made. Drag a fader with the mouse to change the value. To change the value of the same channel type on every fixture, hold shift. For example, to change the color of every fixture, hold shift and move the color fader. Notice that the DMX output value is displayed at the top of the fader.

myDMX 2.0 features a range of preset components to help you to quickly adjust a channel. To access the component, click at the top of the channel where the preset/color is displayed. For example, clicking at the top of a color channel shows a color wheel.

Clicking on the cursor will allow you to drag it around the color wheel. Notice that the RGB values are shown. Clicking on the color wheel and dragging up with the mouse will move the cursor clockwise, dragging down will move the cursor anti clockwise.

With the XY grid, clicking on the center point will allow you to quickly set an XY position. Clicking on a blank space in the grid will allow you to slowly move the position.

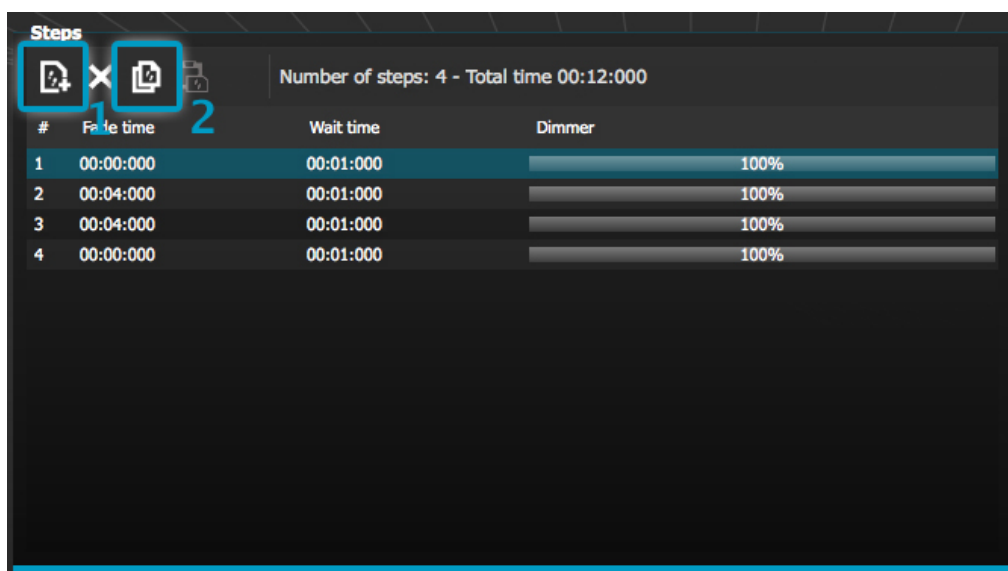


### Scenes and Steps

All programming is made with scenes and steps. A step is a static 'Look' which contains one value for each channel. Several steps make up a scene. Scenes can be created by clicking the top left icon in the scene area.

Once values have been set, steps can be created here(1). When a new step is created, all faders are set to 0. To copy the current step's values, click here(2). Double click the Fade time, Wait time or dimmer value to modify. To modify several steps at the same time, hold control(pc)/command(mac) to select multiple steps. To select a range of steps, select the first step of the range, hold shift and then select the final step of the range.

You can preview your scene by clicking the play button.



## Scene Settings

Double click a property to edit. For example, to change the name of a scene:

1. Double click the name
2. Type the new name
3. Press the Return key

The following properties can be changed:

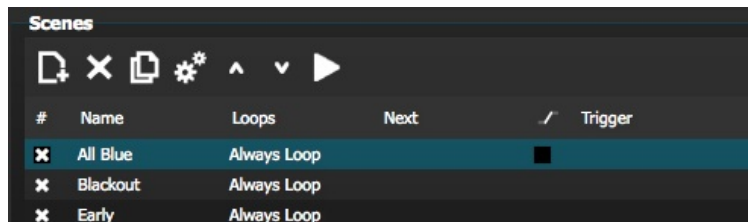
#- If this is selected, the scene will be included in the show

Loops- Set the number of times a scene should repeat

Next- Set where you want to scene to go when it reaches the end (make sure a number of loops has been set first!)

Enable/Disable Fade- When this is selected, the scene will fade in using the fade time of the first step

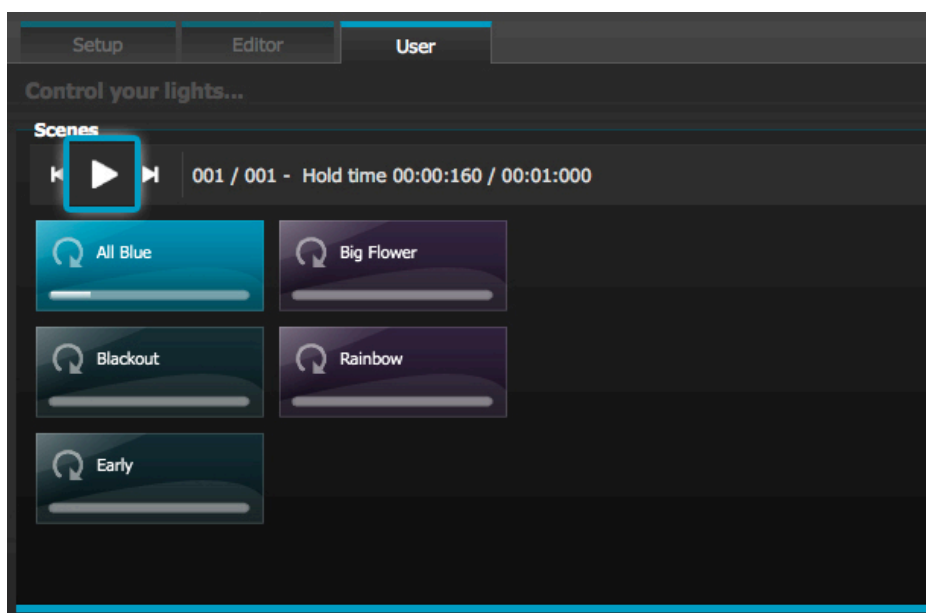
Trigger- Add a keyboard shortcut key to trigger the scene



## 4. User

The User screen is where you run your show. Click a scene to activate it. If you want your scene to listen to the Loop and Next properties, make sure that the Play button is selected here.

It is possible to change the color of a scene by right clicking the scene.



### Live Edits

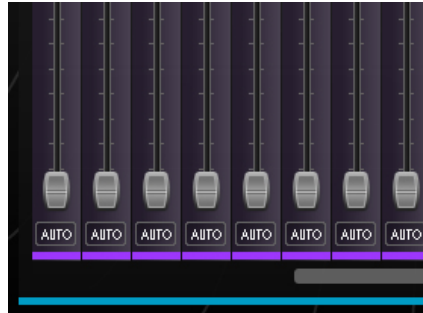
It is possible to override scenes by moving the faders.

There are two options:

LTP- Latest takes priority: The fader value will override the scene

HTP- Highest Takes Priority: If the fader value is higher than the value within the activated scene, it will override the scene

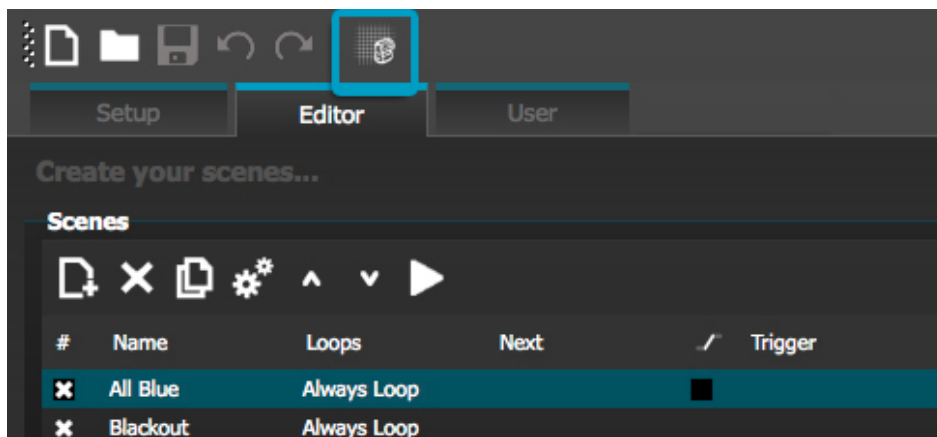
To set up LTP or HTP, make sure that it is enabled within the 'User Options' menu and then click the AUTO button at the bottom of the channel you want to override.



# III Scene Builder

## 1. Arranging Fixtures

The scene builder allows you to quickly and easily build advanced scenes and create effects without the need to set each fader and step manually. It replaces the effects generator and color manager in the previous software version. Create a new scene and click here to open the scene builder.



### Selection Mode

When the scene builder is opened, you will see your lighting fixtures on the left. Each square represents a lighting fixture. Click and drag the squares to position the lighting fixtures. Hold control(PC)/command(Mac) to select multiple fixtures.

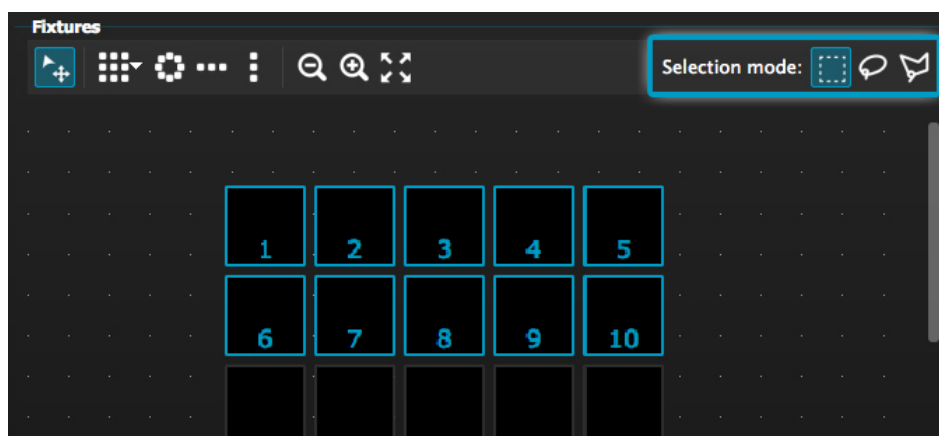
There are 3 tools to help with fixture selection:

Rectangle- Draw a rectangle around the fixtures to select (like selecting files inside explorer/finder)

Lasso- Draw a perimeter around a set of fixtures to select the fixtures within the chosen perimeter

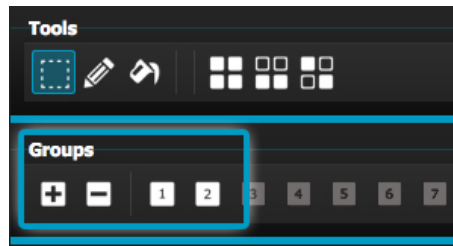
Drag Over- Any fixtures within a drawn shape will be selected

Notice that as fixtures are selected, a number appears. This is the order in which any curve or linear fan effect will be created.



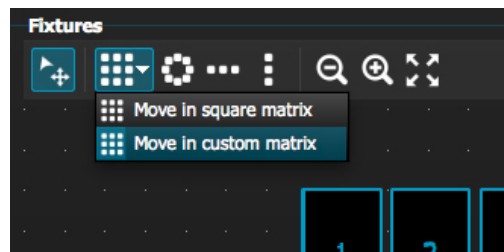
### Groups

Groups can be created to help quick recall of fixture selections. To create a group, select the fixtures to be included inside the group and then select the + button.



### Matrixes

Click [here](#) to create a matrix. myDMX 2.0 will automatically position your lighting fixtures into a matrix. Select the arrow to define a custom width and height of the matrix.

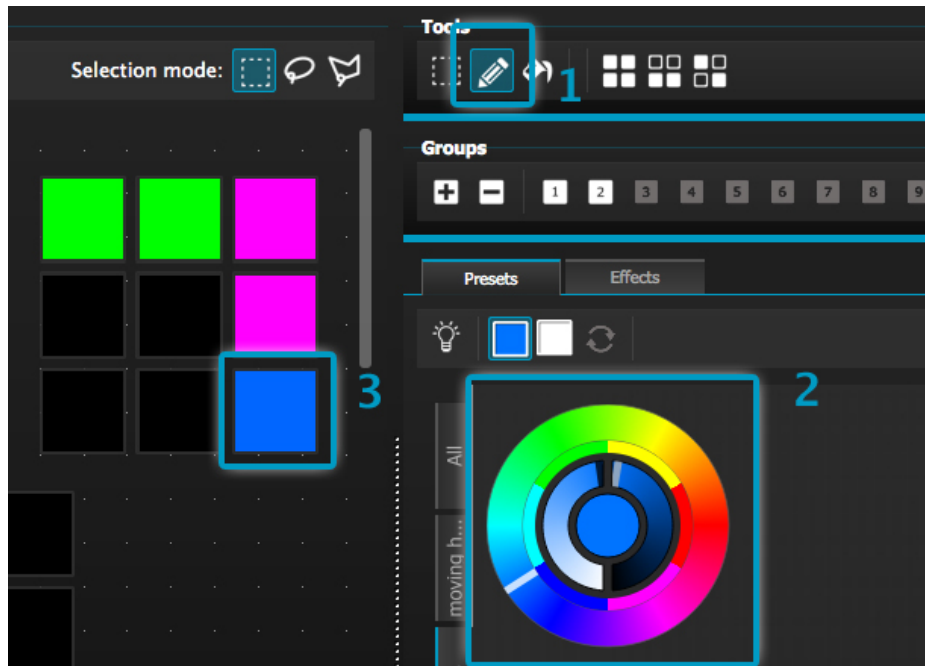


## 2. Controlling Fixtures

Once you have selected the lighting fixtures you wish to control, all common presets will be shown here. To view only the presets of a particular fixture type, select the appropriate tab.

If you have no fixtures selected, you can draw a preset onto a fixture:

1. Select the Pen tool
2. Select the presets you want to change
3. Click on the fixtures you want to update



### Color Wheel

The color wheel offers several ways to change the color

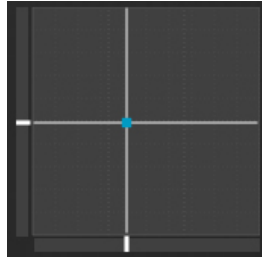
- Click the cursor and drag around the color wheel to choose a color
- Click on the color wheel to jump to one of the 6 preset colors
- Click on the color wheel and drag up and down to move slowly around the color wheel
- Select the center sections to modify the brightness and saturation
- Click in the center of the color wheel to choose a color with a standard color picker or insert RGB values





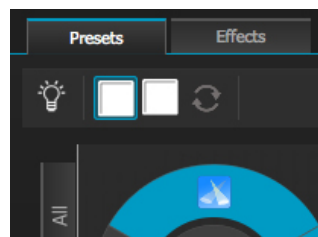
### XY Grid

- The XY grid allows you to modify the pan/tilt channels of a fixture (uPan and uTilt are automatically calculated)
- Click the center point and drag to move the position
- Click a blank space in the grid and drag to slowly move the position, use the scroll wheel of your mouse to adjust the precision
- Select the horizontal and vertical bars to adjust only the pan or tilt



### Beam On

Clicking the beam on button will enable the default preset of each selected fixture. For example, on a moving head this may be 'Shutter Open', 'Iris Open' and 'Dimmer 100%'.

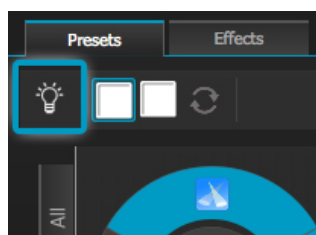


### Linear Fan

The linear fan function allows you to define a range by selecting a start and end point.

The preset range will then be applied across the selected lighting fixtures. This is a great way to create color gradients and position fans.

1. Click here to enable/disable the Linear Fan function
2. Click the down arrow to select the fan type
3. Click on the component to select the start and end range
4. Select the range and drag up and down to move the range

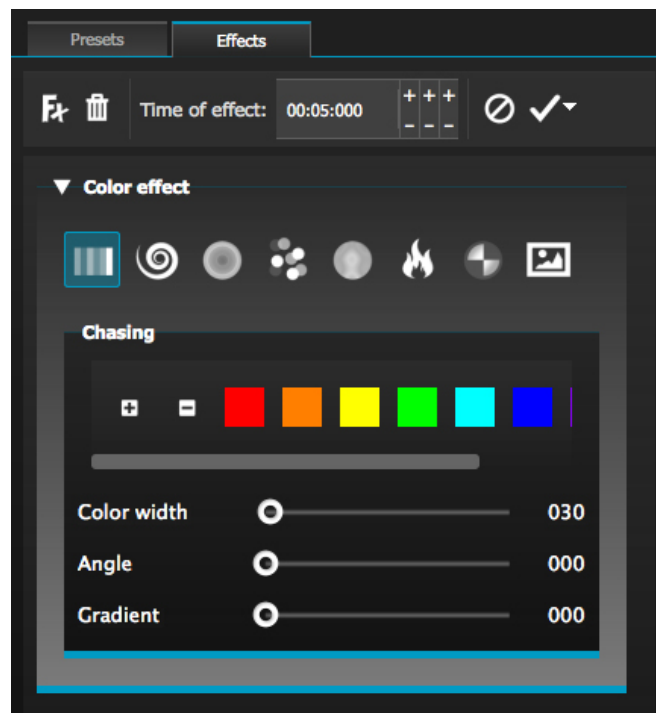


### 3. Effects

#### Color Effect

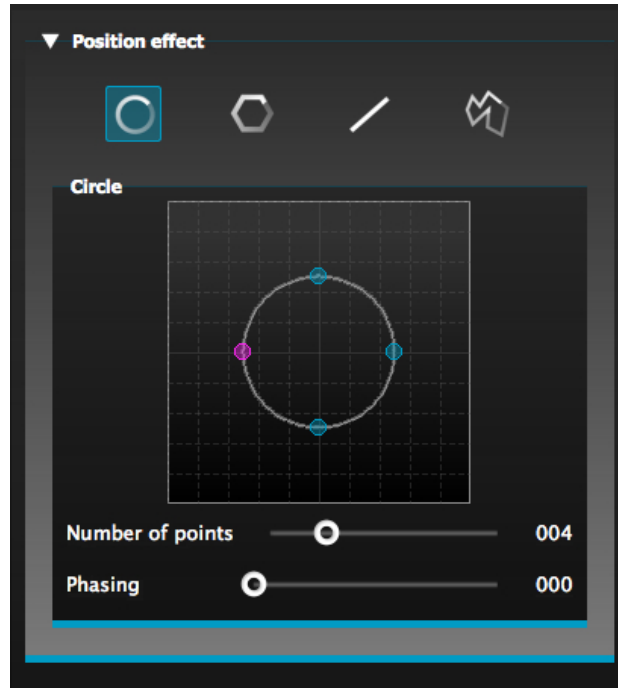
myDMX 2.0 features a powerful RGB color effects generator. To add an effect, select the effects tab and click the FX icon. Select 'Color Effect'. A rectangle will appear in the upper left corner playing a rainbow effect. Drag and drop this over your lighting fixtures. The effect can be resized by dragging the corners.

To modify a color effect, select the effect type and change the properties. It is possible to add many effects at the same time by simply choosing another effect from the menu.



### Position Effect

Position effects allow you to easily create movement patterns for scanners and moving head lighting fixtures. Select the fixtures you want to control, select 'Position Effect' from the FX menu and then select a starting shape. The shape can be altered by clicking on a point and dragging. Phasing will add a delay on each fixture.



### Curve Effect

The curve effect tool allows you to apply a dimming curve to any channel. Select 'Curve Effect' from the FX menu and select the fixtures you wish to control.

The following properties are available:

Rate- Changes the speed of the effect. More wave cycles will be added

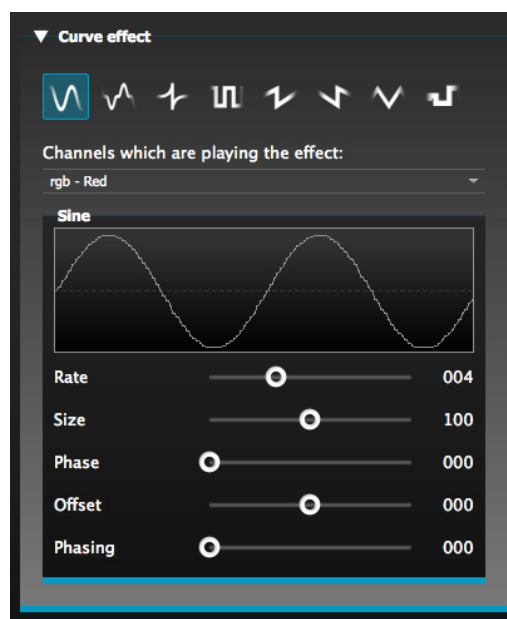
Size- Changes the height of the wave

Phase- Moves the wave forward and backward, consequently changing the starting point

Offset- Moves the wave up and down

Phasing- Adds a delay to each fixture

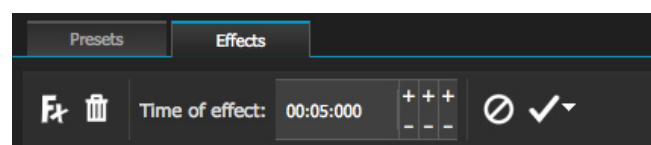
The curve effects can be stacked to create many interesting patterns.



### Generate an Effect

You can remove an individual effect by clicking on the trashcan icon. The whole effect can be cleared by selecting the cancel icon (to the left of the tick icon).

Select the tick icon to generate the effect.



---

## IV Other Features

---

### **1. Easy Remote (coming soon)**

Easy Remote is an iPad and Android tablet app which allows you to control myDMX 2.0 over a WiFi network. The app will be available soon!